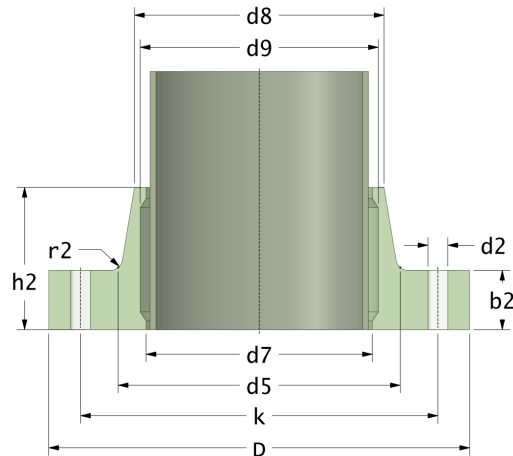


Rotec Vaste Flenzen (Platte Vlakte)

Drilling Standard: AS 2129 Table D



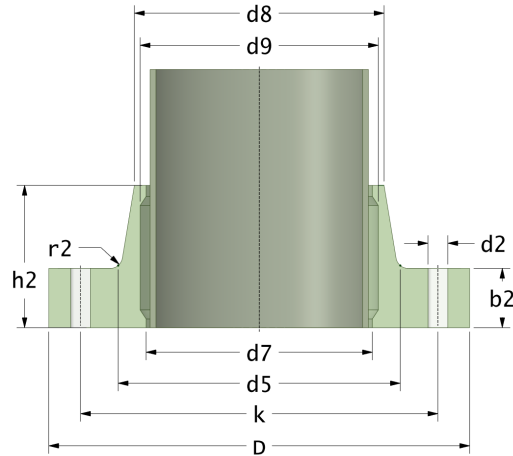
#	DN (mm)	Pmax (bar)	D (mm)	d7 (mm)	d9 (mm)	d8 (mm)	d5 (mm)	r2 (mm)	k (mm)	Holes (no.)	d2 (mm)	h2 (mm)	b2 (mm)	Article Number
1	150	10	285	167	171	178	186	6	235	8	18	70	23	FF-150-10/AS-D
2	150	16	285	167	171	178	186	6	235	8	18	77	30	FF-150-16/AS-D
3	200	10	350	221	225	230	240	6	292	8	18	81	26	FF-200-10/AS-D
4	200	16	350	221	225	230	240	6	292	8	18	91	36	FF-200-16/AS-D
5	250	10	410	273	277	288	294	6	356	8	22	89	29	FF-250-10/AS-D
6	250	16	410	273	277	288	294	6	356	8	22	102	42	FF-250-16/AS-D
7	300	10	460	326	330	338	348	6	406	12	22	97	32	FF-300-10/AS-D
8	300	16	460	326	330	338	348	6	406	12	22	113	48	FF-300-16/AS-D
9	350	10	540	378	382	390	402	8	470	12	26	105	35	FF-350-10/AS-D
10	350	16	540	378	382	390	402	8	470	12	26	124	54	FF-350-16/AS-D
11	400	10	600	429	433	441	455	8	521	12	26	113	38	FF-400-10/AS-D
12	400	16	600	429	433	441	455	8	521	12	26	135	60	FF-400-16/AS-D
13	450	10	644	480	484	495	506	8	584	12	26	121	41	FF-450-10/AS-D
14	450	16	644	480	484	495	506	8	584	12	26	146	66	FF-450-16/AS-D
15	500	10	720	532	536	547	560	8	641	16	26	129	44	FF-500-10/AS-D
16	500	16	720	532	536	547	560	8	641	16	26	157	72	FF-500-16/AS-D
17	630	10	844	631	635	644	666	12	756	16	30	145	50	FF-630-10/AS-D
18	630	16	844	631	635	644	666	12	756	16	30	179	84	FF-630-16/AS-D

Disclaimer

Whilst every care is taken to ensure that the information on this website is complete and accurate, the Rotec Composite Group BV cannot accept responsibility for any omissions or inaccuracies or for any consequences arising therefrom. By using this website, the user accepts the terms of this disclaimer.

Rotec Vaste Flenzen (Platte Vlakte)

Drilling Standard: AS 2129 Table D



#	DN (mm)	Pmax (bar)	D (mm)	d7 (mm)	d9 (mm)	d8 (mm)	d5 (mm)	r2 (mm)	k (mm)	Holes (no.)	d2 (mm)	h2 (mm)	b2 (mm)	Article Number
19	700	10	910	720	724	733	758	11	845	20	30	161	56	FF-700-10/AS-D
20	700	16	910	720	724	733	758	11	845	20	30	201	96	FF-700-16/AS-D
21	800	10	1085	822	826	835	858	18	984	20	36	177	62	FF-800-10/AS-D
22	800	16	1085	822	826	835	858	18	984	20	36	223	108	FF-800-16/AS-D
23	900	10	1190	924	928	939	964	18	1092	24	36	193	68	FF-900-10/AS-D
24	900	16	1190	924	928	939	964	18	1092	24	36	245	120	FF-900-16/AS-D
25	1000	10	1265	1026	1030	1044	1065	14	1175	24	36	214	74	FF-1000-10/AS-D
26	1000	16	1265	1026	1030	1044	1065	14	1175	24	36	272	132	FF-1000-16/AS-D
27	1200	10	1520	1231	1235	1250	1280	14	1410	32	36	206	86	FF-1200-10/AS-D
28	1200	16	1520	1231	1235	1250	1280	14	1410	32	36	331	156	FF-1200-16/AS-D

Disclaimer

Whilst every care is taken to ensure that the information on this website is complete and accurate, the Rotec Composite Group BV cannot accept responsibility for any omissions or inaccuracies or for any consequences arising therefrom. By using this website, the user accepts the terms of this disclaimer.

17-11-2022