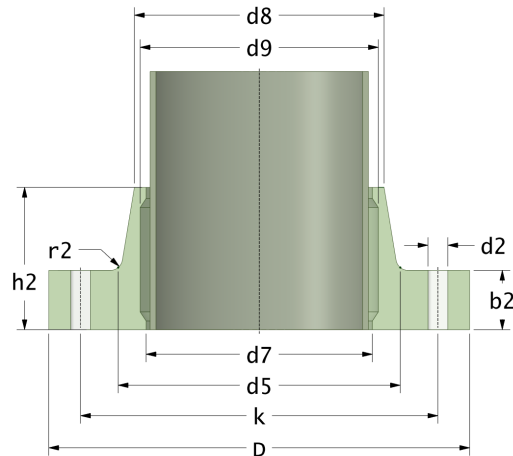


## Rotec Vaste Flenzen (Platte Vlakte)

Drilling Standard: ANSI B16.5 Class 300



#	DN (mm)	Pmax (bar)	D (mm)	d7 (mm)	d9 (mm)	d8 (mm)	d5 (mm)	r2 (mm)	k (mm)	Holes (no.)	d2 (mm)	h2 (mm)	b2 (mm)	Article Number
1	150	16	325	167	171	178	194	16	270	12	22	80	30	FF-150-16/300
2	150	20	325	167	171	178	194	16	270	12	22	87	37	FF-150-20/300
3	150	25	325	167	171	178	194	16	270	12	22	94	44	FF-150-25/300
4	200	16	380	221	225	230	246	11	330	12	25	98	36	FF-200-16/300
5	200	20	380	221	225	230	246	11	330	12	25	108	46	FF-200-20/300
6	200	25	380	221	225	230	246	11	330	12	25	118	56	FF-200-25/300
7	250	16	450	273	277	288	298	12	387	16	29	102	42	FF-250-16/300
8	250	20	450	273	277	288	298	12	387	16	29	115	55	FF-250-20/300
9	250	25	450	273	277	288	298	12	387	16	29	128	68	FF-250-25/300
10	300	16	540	326	330	338	356	16	451	16	32	123	48	FF-300-16/300
11	300	20	540	326	330	338	356	16	451	16	32	139	64	FF-300-20/300
12	300	25	540	326	330	338	356	16	451	16	32	155	80	FF-300-25/300
13	350	16	585	378	382	390	406	12	514	20	32	144	54	FF-350-16/300
14	350	20	585	378	382	390	406	12	514	20	32	163	73	FF-350-20/300
15	350	25	585	378	382	390	406	12	514	20	32	182	92	FF-350-25/300
16	400	16	660	429	433	441	464	12	572	20	35	160	60	FF-400-16/300

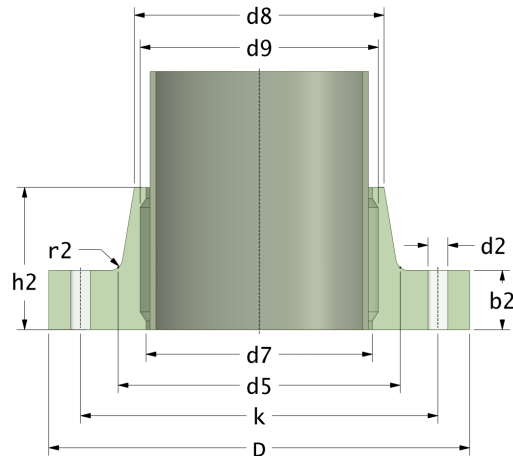
### Disclaimer

Whilst every care is taken to ensure that the information on this website is complete and accurate, the Rotec Composite Group BV cannot accept responsibility for any omissions or inaccuracies or for any consequences arising therefrom. By using this website, the user accepts the terms of this disclaimer.

17-11-2022

## Rotec Vaste Flenzen (Platte Vlakte)

Drilling Standard: ANSI B16.5 Class 300



#	DN (mm)	Pmax (bar)	D (mm)	d7 (mm)	d9 (mm)	d8 (mm)	d5 (mm)	r2 (mm)	k (mm)	Holes (no.)	d2 (mm)	h2 (mm)	b2 (mm)	Article Number
17	400	20	660	429	433	441	464	12	572	20	35	182	82	FF-400-20/300
18	400	25	660	429	433	441	464	12	572	20	35	204	104	FF-400-25/300
19	450	16	710	480	484	495	520	12	629	24	35	176	66	FF-450-16/300
20	450	20	710	480	484	495	520	12	629	24	35	201	91	FF-450-20/300
21	450	25	710	480	484	495	520	12	629	24	35	226	116	FF-450-25/300
22	500	16	775	532	536	547	570	12	686	24	35	167	72	FF-500-16/300
23	500	20	775	532	536	547	570	12	686	24	35	195	100	FF-500-20/300
24	500	25	775	532	536	547	570	12	686	24	35	223	128	FF-500-25/300
25	630	16	915	631	635	644	680	14	813	24	41	234	84	FF-630-16/300
26	630	20	915	631	635	644	680	14	813	24	41	268	118	FF-630-20/300
27	630	25	915	631	635	644	680	14	813	24	41	302	152	FF-630-25/300

### Disclaimer

Whilst every care is taken to ensure that the information on this website is complete and accurate, the Rotec Composite Group BV cannot accept responsibility for any omissions or inaccuracies or for any consequences arising therefrom. By using this website, the user accepts the terms of this disclaimer.

17-11-2022