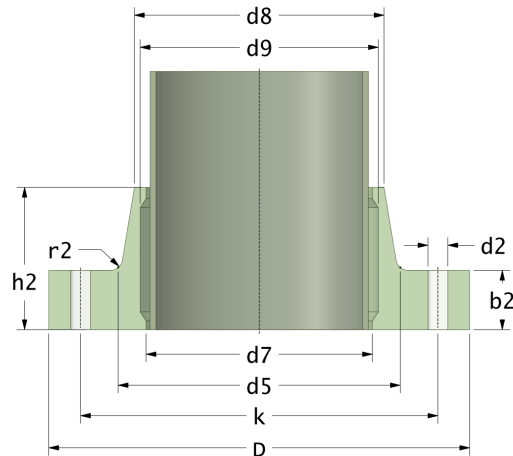


Rotec Vaste Flenzen (Platte Vlakte)

Drilling Standard: ANSI B16.5 Class 150



#	DN (mm)	Pmax (bar)	D (mm)	d7 (mm)	d9 (mm)	d8 (mm)	d5 (mm)	r2 (mm)	k (mm)	Holes (no.)	d2 (mm)	h2 (mm)	b2 (mm)	Article Number
1	150	10	285	167	171	178	186	6	241	8	22	70	23	FF-150-10/150
2	150	16	285	167	171	178	186	6	241	8	22	77	30	FF-150-16/150
3	200	10	350	221	225	230	240	6	299	8	22	81	26	FF-200-10/150
4	200	16	350	221	225	230	240	6	299	8	22	91	36	FF-200-16/150
5	250	10	410	273	277	288	294	6	362	12	25	89	29	FF-250-10/150
6	250	16	410	273	277	288	294	6	362	12	25	102	42	FF-250-16/150
7	300	10	490	326	330	338	354	9	432	12	25	97	32	FF-300-10/150
8	300	16	490	326	330	338	354	9	432	12	25	113	48	FF-300-16/150
9	350	10	540	378	382	390	402	8	476	12	29	105	35	FF-350-10/150
10	350	16	540	378	382	390	402	8	476	12	29	124	54	FF-350-16/150
11	400	10	600	429	433	441	455	8	540	16	29	113	38	FF-400-10/150
12	400	16	600	429	433	441	455	8	540	16	29	135	60	FF-400-16/150
13	450	10	644	480	484	495	506	8	578	16	32	121	41	FF-450-10/150
14	450	16	644	480	484	495	506	8	578	16	32	146	66	FF-450-16/150
15	500	3	720	532	536	547	560	8	635	20	32	116	31	FF-500-03/150
16	500	10	720	532	536	547	560	8	635	20	32	129	44	FF-500-10/150

Disclaimer

Whilst every care is taken to ensure that the information on this website is complete and accurate, the Rotec Composite Group BV cannot accept responsibility for any omissions or inaccuracies or for any consequences arising therefrom. By using this website, the user accepts the terms of this disclaimer.

17-11-2022

Rotec Vaste Flenzen (Platte Vlakte)

Drilling Standard: ANSI B16.5 Class 150



#	DN (mm)	Pmax (bar)	D (mm)	d7 (mm)	d9 (mm)	d8 (mm)	d5 (mm)	r2 (mm)	k (mm)	Holes (no.)	d2 (mm)	h2 (mm)	b2 (mm)	Article Number
17	500	16	720	532	536	547	560	8	635	20	32	157	72	FF-500-16/150
18	600	3	844	618	622	637	652	10	749	20	35	129	34	FF-600-03/150
19	600	10	844	618	622	637	652	10	749	20	35	145	50	FF-600-10/150
20	600	16	844	618	622	637	652	10	749	20	35	179	84	FF-600-16/150
21	630	3	844	631	635	644	666	12	749	20	35	129	34	FF-630-03/150
22	630	10	844	631	635	644	666	12	749	20	35	145	50	FF-630-10/150
23	630	16	844	631	635	644	666	12	749	20	35	179	84	FF-630-16/150

Disclaimer

Whilst every care is taken to ensure that the information on this website is complete and accurate, the Rotec Composite Group BV cannot accept responsibility for any omissions or inaccuracies or for any consequences arising therefrom. By using this website, the user accepts the terms of this disclaimer.

17-11-2022