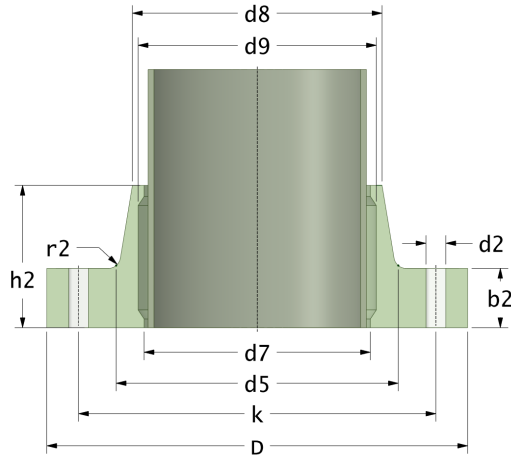


## Fixed Flanges

Adhesive bonded Fixed Flange (Flat Face) for GRP pipe

Drilling Standard: JIS B2220 20K



#	DN (mm)	Pmax (bar)	D (mm)	d7 (mm)	d9 (mm)	d8 (mm)	d5 (mm)	r2 (mm)	k (mm)	Holes (no.)	d2 (mm)	h2 (mm)	b2 (mm)	Article Number
1	150	20	305	167	171	178	186	9	260	12	25	87	37	FF-150-20/20K
2	150	25	305	167	171	178	186	9	260	12	25	94	44	FF-150-25/20K
3	200	20	380	221	225	230	246	11	305	12	25	108	46	FF-200-20/20K
4	200	25	380	221	225	230	246	11	305	12	25	118	56	FF-200-25/20K
5	250	20	430	273	277	288	298	9	380	12	27	115	55	FF-250-20/20K
6	250	25	430	273	277	288	298	9	380	12	27	128	68	FF-250-25/20K
7	300	20	490	326	330	338	354	9	430	16	27	129	64	FF-300-20/20K
8	300	25	490	326	330	338	354	9	430	16	27	145	80	FF-300-25/20K
9	350	20	540	378	382	390	402	8	480	16	33	143	73	FF-350-20/20K
10	350	25	540	378	382	390	402	8	480	16	33	162	92	FF-350-25/20K
11	400	20	600	429	433	441	455	8	540	16	33	157	82	FF-400-20/20K
12	450	20	710	480	484	495	520	12	605	20	33	201	91	FF-450-20/20K
13	450	25	710	480	484	495	520	12	605	20	33	226	116	FF-450-25/20K
14	500	20	735	532	536	547	570	12	660	20	33	195	100	FF-500-20/20K
15	500	25	735	532	536	547	570	12	660	20	33	223	128	FF-500-25/20K
16	630	20	850	631	635	644	670	14	770	24	39	228	118	FF-630-20/20K

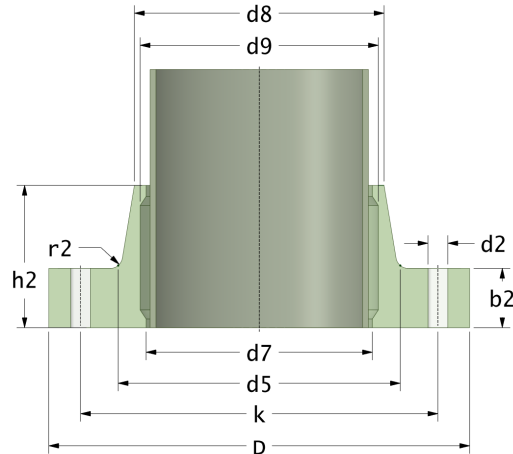
### Disclaimer

Whilst every care is taken to ensure that the information on this website is complete and accurate, the Rotec Composite Group BV cannot accept responsibility for any omissions or inaccuracies or for any consequences arising therefrom. By using this website, the user accepts the terms of this disclaimer.

## Fixed Flanges

Adhesive bonded Fixed Flange (Flat Face) for GRP pipe

Drilling Standard: JIS B2220 20K



#	DN (mm)	Pmax (bar)	D (mm)	d7 (mm)	d9 (mm)	d8 (mm)	d5 (mm)	r2 (mm)	k (mm)	Holes (no.)	d2 (mm)	h2 (mm)	b2 (mm)	Article Number
17	700	20	1035	720	724	733	765	18	900	24	48	261	136	FF-700-20/20K
18	700	25	1035	720	724	733	765	18	900	24	48	301	176	FF-700-25/20K
19	800	20	1150	822	826	835	868	18	1030	24	56	299	154	FF-800-20/20K
20	800	25	1150	822	826	835	868	18	1030	24	56	345	200	FF-800-25/20K
21	900	20	1270	924	928	939	975	22	1140	28	56	332	172	FF-900-20/20K
22	900	25	1270	924	928	939	975	22	1140	28	56	384	224	FF-900-25/20K

### Disclaimer

Whilst every care is taken to ensure that the information on this website is complete and accurate, the Rotec Composite Group BV cannot accept responsibility for any omissions or inaccuracies or for any consequences arising therefrom. By using this website, the user accepts the terms of this disclaimer.

17-11-2022