

Rotec Fixed Flanges (Flat Face)

Drilling Standard: EN1092 PN16



#	DN (mm)	Pmax (bar)	D (mm)	d7 (mm)	d9 (mm)	d8 (mm)	d5 (mm)	r2 (mm)	k (mm)	Holes (no.)	d2 (mm)	h2 (mm)	b2 (mm)	Article Number
1	150	10	285	170	174	178	184	5	240	8	22	70	23	FF-150-10/16
2	150	16	285	170	174	178	184	5	240	8	22	85	38	FF-150-16/16
3	200	10	340	222	226	230	237	5	295	12	22	80	25	FF-200-10/16
4	200	16	340	222	226	230	237	5	295	12	22	95	40	FF-200-16/16
5	250	10	405	274	278	284	293	5	355	12	26	89	29	FF-250-10/16
6	250	16	405	274	278	284	293	5	355	12	26	102	42	FF-250-16/16
7	300	10	460	326	330	336	342	5	410	12	26	97	32	FF-300-10/16
8	300	16	460	326	330	336	342	5	410	12	26	113	48	FF-300-16/16
9	350	10	520	378	382	388	398	6	470	16	26	105	35	FF-350-10/16
10	350	16	520	378	382	388	398	6	470	16	26	124	54	FF-350-16/16
11	400	10	585	429	433	439	451	6	525	16	30	113	38	FF-400-10/16
12	400	16	585	429	433	439	451	6	525	16	30	135	60	FF-400-16/16
13	450	10	640	480	484	491	503	6	585	20	30	121	41	FF-450-10/16
14	450	16	640	480	484	491	503	6	585	20	30	146	66	FF-450-16/16
15	500	10	715	532	536	543	556	6	650	20	33	129	44	FF-500-10/16
16	500	16	715	532	536	543	556	6	650	20	33	157	72	FF-500-16/16

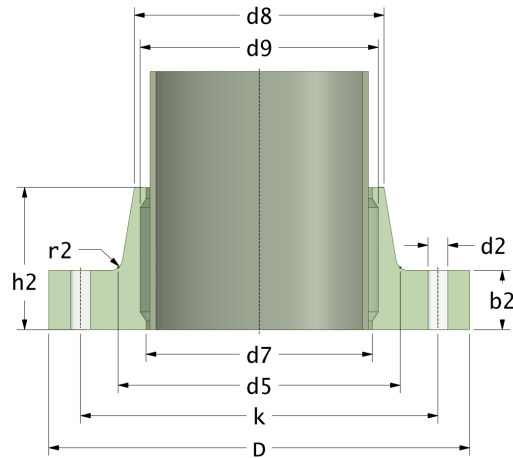
Disclaimer

Whilst every care is taken to ensure that the information on this website is complete and accurate, the Rotec Composite Group BV cannot accept responsibility for any omissions or inaccuracies or for any consequences arising therefrom. By using this website, the user accepts the terms of this disclaimer.

17-11-2022

Rotec Fixed Flanges (Flat Face)

Drilling Standard: EN1092 PN16



#	DN (mm)	Pmax (bar)	D (mm)	d7 (mm)	d9 (mm)	d8 (mm)	d5 (mm)	r2 (mm)	k (mm)	Holes (no.)	d2 (mm)	h2 (mm)	b2 (mm)	Article Number
17	600	10	840	618	622	645	664	7	770	20	36	145	50	FF-600-10/16
18	600	16	840	618	622	645	664	7	770	20	36	173	78	FF-600-16/16
19	700	10	910	721	725	733	756	7	840	24	36	155	56	FF-700-10/16
20	700	16	910	721	725	733	756	7	840	24	36	183	84	FF-700-16/16
21	800	10	1025	823	827	835	861	7	950	24	39	175	62	FF-800-10/16
22	800	16	1025	823	827	835	861	7	950	24	39	203	90	FF-800-16/16
23	900	10	1125	926	930	939	967	7	1050	28	39	193	67	FF-900-10/16
24	900	16	1125	926	930	939	967	7	1050	28	39	221	95	FF-900-16/16
25	1000	10	1255	1028	1032	1044	1070	7	1170	28	42	205	72	FF-1000-10/16
26	1000	16	1255	1028	1032	1044	1070	7	1170	28	42	236	103	FF-1000-16/16
27	1200	10	1484	1232	1236	1250	1278	8	1390	32	48	215	80	FF-1200-10/16
28	1200	16	1484	1232	1236	1250	1278	8	1390	32	48	250	115	FF-1200-16/16
29	1400	10	1685	1436	1440	1455	1486	8	1590	36	48	240	95	FF-1400-10/16
30	1400	16	1685	1436	1440	1455	1486	8	1590	36	48	275	130	FF-1400-16/16
31	1600	10	1930	1642	1646	1662	1696	8	1820	40	56	255	110	FF-1600-10/16
32	1600	16	1930	1642	1646	1662	1696	8	1820	40	56	290	145	FF-1600-16/16
33	1800	10	2130	1846	1850	1866	1916	10	2020	44	56	282	122	FF-1800-10/16

Disclaimer

Whilst every care is taken to ensure that the information on this website is complete and accurate, the Rotec Composite Group BV cannot accept responsibility for any omissions or inaccuracies or for any consequences arising therefrom. By using this website, the user accepts the terms of this disclaimer.

17-11-2022

Rotec Fixed Flanges (Flat Face)

Drilling Standard: EN1092 PN16



#	DN (mm)	Pmax (bar)	D (mm)	d7 (mm)	d9 (mm)	d8 (mm)	d5 (mm)	r2 (mm)	k (mm)	Holes (no.)	d2 (mm)	h2 (mm)	b2 (mm)	Article Number
34	1800	16	2130	1846	1850	1866	1916	10	2020	44	56	320	160	FF-1800-16/16
35	2000	10	2360	2049	2053	2072	2114	10	2230	48	62	364	134	FF-2000-10/16

Disclaimer

Whilst every care is taken to ensure that the information on this website is complete and accurate, the Rotec Composite Group BV cannot accept responsibility for any omissions or inaccuracies or for any consequences arising therefrom. By using this website, the user accepts the terms of this disclaimer.

17-11-2022